

SETOP GIRAUD TECHNOLOGIE

248, Route du Moulin de Losque

84300

tél. (33) 04 90 76 15 34

Fax. (33) 04 90 71 82 01



User Manual



DUROFEL_PENEFEL
Software
V 1.3



Created 4/17/2008	User Manual	
V/Réf : V 1.3	DUROFEL PENEFEL Software	

Table of contents

1	PRESENTATION OF DUROFEL & PENEFEL SOFTWARE	3
1.1	INTRODUCTION	3
1.2	UPDATE V 1.3 04/16/2008	3
2	INSTALL	4
3	RUNNING DUROFEL_PENEFEL SOFTWARE	4
3.1	MAIN WINDOW.....	4
3.1.1	<i>Menus description</i>	5
3.2	PARAMETERS MENU.....	5
3.2.1	<i>Controls description</i>	5
4	MAKE A TRANSFER	6
4.1	COMPUTER SIDE.....	6
4.2	DEVICE SIDE	6

Created 17/04/2008	User Manual	
V/Réf : V 1.3	DUROFEL PENEFEL Software	

1 Presentation of DUROFEL & PENEFEL Software


1.1 Introduction

DUROFEL PENEFEL V 1.3 Software is used to collect data's from « DUROFEL & PENFEL » devices.

So you can download measurement data's and transfer to Excel to processing.

1.2 Update V 1.3 04/16/2008

- Adding a language selection window
- 4 languages management (French, English, Italian, Spanish)
- New install proceedings
- New additional Init File
- New User Manual

Created 4/17/2008	User Manual	
V/Réf : V 1.3	DUROFEL PENEFEL Software	

2 Install

Place the CD-ROM into the drive and run **Setup.exe** file and execute the following instructions.

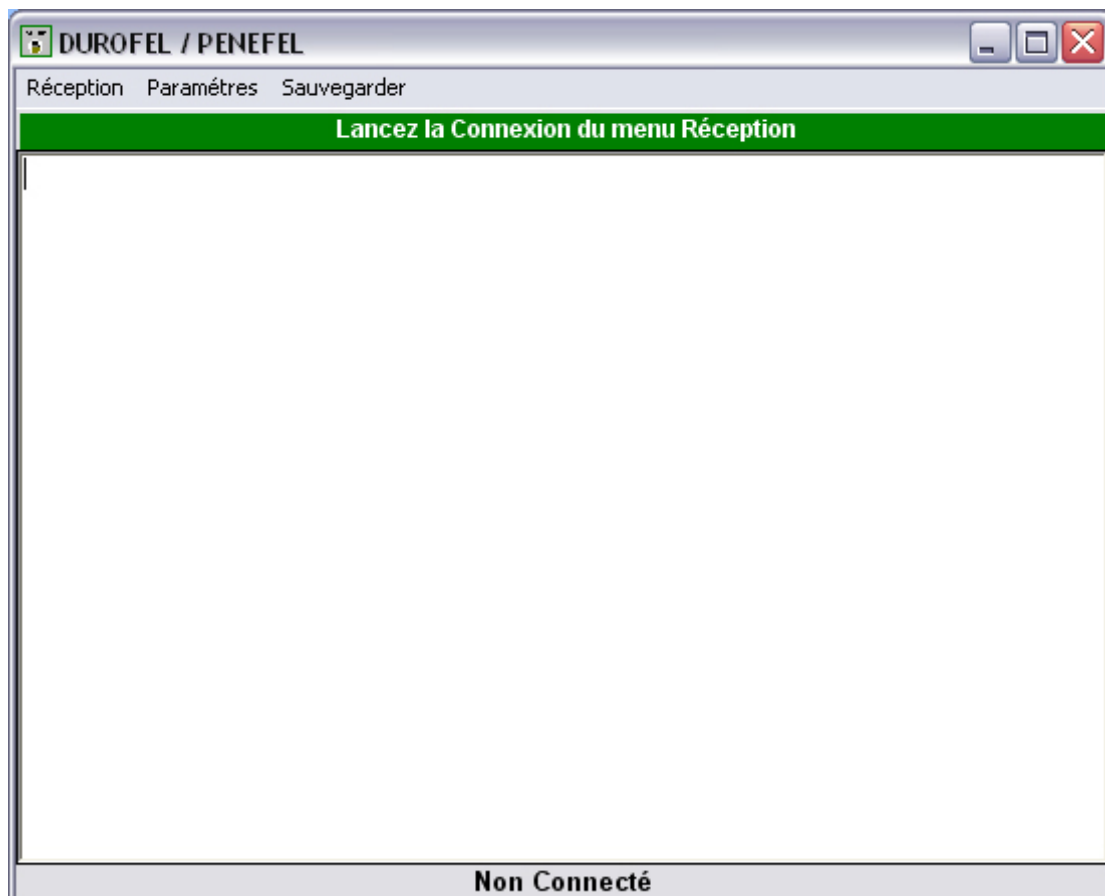
3 Running Durofel_Penefel software

To start Durofel_Penefel software, double click on the **icon Durofel_Penefel.exe** installed on the WINDOWS desktop after installation.




Durofel_Penefel.exe

3.1 Main Window



At the bottom of the window, a message indicate the connection status

At the top of the screen (green field), instructions to follow are displayed.

Created 4/17/2008	User Manual	
V/Réf : V 1.3	DUROFEL PENEFEL Software	

3.1.1 Menus description

Reception menu:

- **Connection:** open the serial port to connect to DUROFEL or PENEFEL devices. This selection window is displayed:



Once the device is selected, the program is ready to receive data's.

- **Disconnection:** closes the communication port.

Parameters menu allows the selection of the different parameters (see parameters windows)


Save menu allows saving data's into an Excel compatible file

3.2 Parameters menu



3.2.1 Controls description

- **Com** selects the PC communication COM Port used to connect the device.
- **Speed** select transmission baud rate
- **Language** select the user language

Created 4/17/2008	User Manual	
V/Réf : V 1.3	DUROFEL PENEFEL Software	

4 Make a transfer

4.1 Computer side

1. Click on **Reception** menu and select device type.
2. The program stays awaiting data's.
3. Once data's are being transferred a red warning is displayed at the bottom edge of the window.
4. When download is finished, the red warning disappears, data's are displayed and the programs close the connection.
5. Data's can be saved on a file compatible with Microsoft EXCEL.

4.2 Device side

1. Utilities are invoked from main screen "SETOP" as follows:
 - Press left arrow key ← and while you keep it switched, press right arrow key → and keep it switched too.
 - Now unpress left arrow key ← and then unpress right arrow key →.
 - Press E to validate, when you arrived to the transfer screen
2. When you see the Transfer screen press on the arrow key to transfer the data's.